

What is School Nursing?

School nursing is a specialized practice of professional nursing that advances the well-being, academic success and life-long achievement and health of students.

To that end, school nurses facilitate positive student responses to normal development; promote health and safety including a healthy environment; intervene with actual and potential health problems; provide case management services; and actively collaborate with others to build student and family capacity for adaptation, self-management, self advocacy, and learning.
(NASN, 2010)



Want to know more about school nursing?

Visit the School Nurse Organization of Washington website at www.schoolnurseorganizationofwashington.org

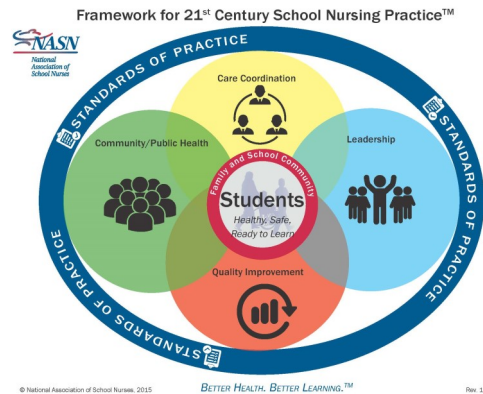
The School Nurse Organization of Washington (SNOW) is a non-profit professional organization started in 1956 as an outgrowth of the Washington State Nurses Association.

SNOW Mission Statement:
SNOW supports school nurses in the delivery of health services designed to improve the health and academic success of students.

(August 2011)

Like us on Facebook:
www.facebook.com/schoolnurseoanizationofwashington

Also visit the
National Association of School Nurses
Website at
www.nasn.org



On behalf of NASN. (2016). Framework for 21st century school nursing practice: National Association of School Nurses. *NASN School Nurse*, 31 (1), 45-53. Doi: 10.1177/1942602X15618644

Considering the Profession of School Nursing?



Better Health Better Learning™

Day in the Life of a School Nurse...

A sampling what school nurses do daily to help students be healthy, safe & ready to learn.



- Chronic Disease Case Management
- Direct Student Care
- Education/Training
- Nursing Delegation
- Student Care plans
- Transition Planning



- Student Advocacy
- Education & Healthcare Reform
- Funding/Reimbursement
- Technology
- Policy Development & Implementation
- System-Level Lead



- Documentation/Data Collection
- Evaluation
- Research
- Continuous Quality Improvement



- Accessing Health Care
- Practicing Cultural Competent Care
- Disease Prevention
- Environmental Health
- Risk Reduction
- Screening/Referrals/Follow-up
- Surveillance

How do I Become a School Nurse?

- School nursing requires advanced skills to address the complex health needs of students within an educational setting.
- In Washington State, a School Nurse is defined as an RN with a BSN & state (ESA) certification.
- There is no mandate for nurses working in Washington schools to be a School Nurse.
- Depending on the specific school district's policy, there may be nurses with varying educations working in schools.

Why a BSN?

- Baccalaureate nursing education develops skills in leadership and critical thinking; the ability to translate research into nursing practice; and knowledge of population based health.
- These important skills are not addressed in an associate degree nursing (ADN) education.

What is State Certification?

Educational Staff Associate (ESA) is the title of the Washington state level certificate that can be earned by qualified nurses working in the school system from the Office of the Superintendent of Public Instruction (OSPI).

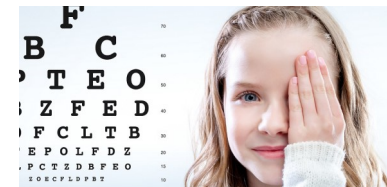
What is National Certification?

The National Board for Certification of School Nurses offers an exam for school nursing certification. Those who successfully complete the exam earn the credential, NCSN for National Certified School Nurse.



Why Become a School Nurses?

- Advanced independent nursing practice
- High level of job satisfaction through impacting your community daily.
- Atypical nursing schedule that is family friendly by having weekends, holidays & summers off.
- Fast paced work days with constant variation.
- Salary advancement for continuing education if hired on a teacher's contract as a certified employee (BSN or above & ESA certified)



Who Hires School Nurses?

- Public School Districts
- Local Education Agency's Boards of Education (OSPI, PESB)
- Departments of Health
- Public Health Departments & Agencies
- Hospitals, hospital districts

Where do I Find a School Nurse Job?

- Public School District website particularly in the late Spring/Early Summer hiring for the upcoming fall.
- Other above employer's websites.
- SNOW website